

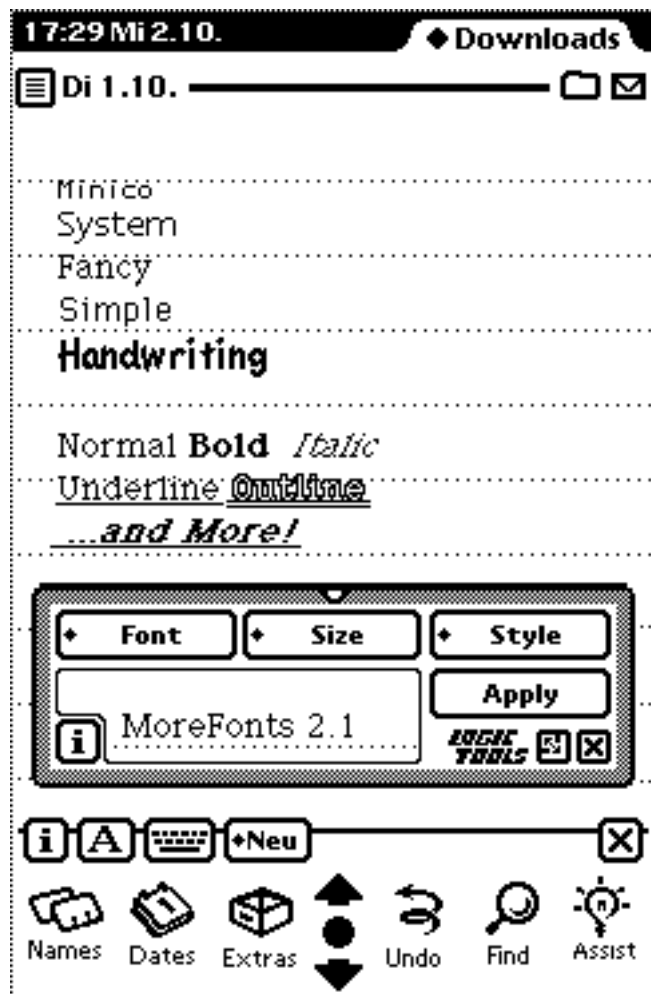
Nick's FontDrive 2.2

Nick's FontDrive, ex Nick's MoreFonts

(c) 1996, 1997 by logic tools, Nick Müller, München

FontDrive is freeware/shareware and you are free to give it to your friends, as long as this text is included. For details see the Legal Stuff section below.

What is FontDrive?:



FontDrive lets you make the same settings as with the "Style" application, with the exception of the pen size.

FontDrive supports the four built-in (ROM) fonts (3 under OS 1.x) and an "unlimited" number of download able fonts.

FontDrive can combine all possible styles with one another.

FontDrive can be used where "Styles" is applicable, e.g. not in "Dates" or apps where "Styles" can't change the font.

FontDrive has a minimize button to get it out of your way while writing.

FontDrive has a preview window.

FontDrive installs a short-cut button in all those apps that support the feature. (Not with the OS 1.x-version).

FontDrive has a add on keyboard that can be configured in size, layout, mapping and more.

FontDrive has a keyboard that uses the active font for displaying.

Installation:

The program can be easily installed like any other Newton-package with your Connection Kit or other package downloader. Read the documentation for more instructions on how to install packages.

There are four versions of **FontDrive** in the archive. Two English versions named "FD1x_US.pkg" and "FD2x_US.pkg" and two German versions named "FD2x_DE.pkg" and "FD1x_DE.pkg". Install the language and operating system (OS) appropriate for your Newton. If you do have a MessagePad with OS 1.x, you should install FD1x, if you do have a Newton with OS 2.0 or OS 2.1 (Newtons MP 130 or MP 2000) install FD2x. If you are in doubt, try to install the OS 2.x version, your Newton will complain if he has the

wrong OS.

If you do have OS 2.x, then you can install the additional keyboard **FD-Keyboard**. The English version is FDKBD_US.pkg, the German is FDKBD_DE.pkg.

After successful installation you will see a new icon (picture 2) in the extras-drawer. Tap on it to start **FontDrive**.

If you did install **FD-Keyboard**, then there will be a second new icon. **FD-Keyboard** is not started by taping on it. For more about it, read the chapter Add-on keyboard.

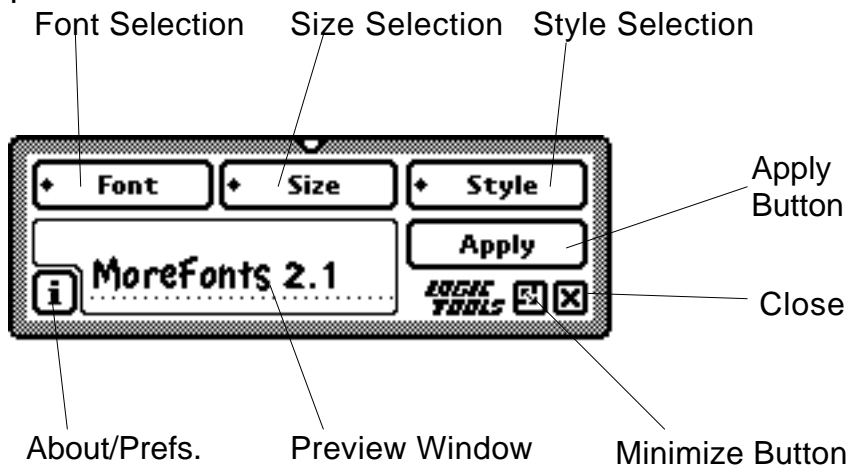
Picture 2 FontDrive Icon



How To Use:

Note that the OS 1.x version has not all the features the OS 2.x version offers.

picture 3 The buttons

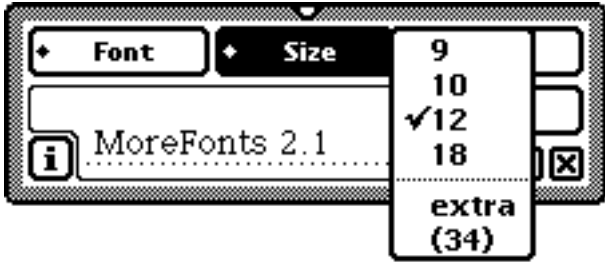


- **FontDrive** remembers the last position in the shrinked state. This way, you don't have to reposition the display after every expand/shrink cycle.
- The selectable predefined sizes depend on the font.
- After selecting the font use Apply to set the selected text.
- If you didn't mark any text in advance, the next written input will be in the applied font and style.

picture 4 Selecting a font (With download-font Minico)



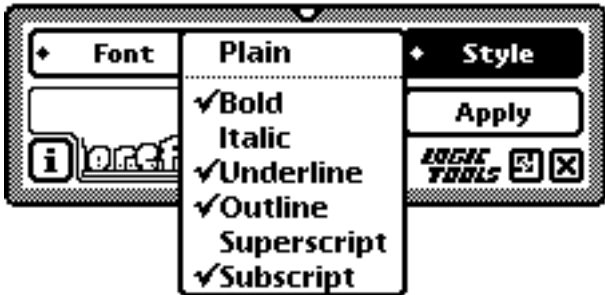
picture 5 Selecting a size (with predefined system-sizes)



picture 6 Selecting a size (free scalability)

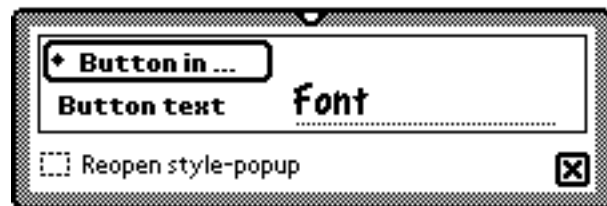


picture 7 Selecting a style with some combinations



Preferences:

You open the preferences by tapping on the i-button in the lower left.



If you tap on the button "Button in ...", you will get a selection of all the apps that are currently installed on your Newton and support adding a extra button to their status bar. Be aware, that **FontDrive** can't decide of the usefulness of adding that button. You will have to try it out

whether it makes sense. Entries with a check mark are apps that do have the button installed.

You can change the text appearing in the button by changing the entry "Button text".

By checking the option "Reopen style-popup", the popup will reopen until you tap outside of the selection list.



Warning:

You can apply **FontDrive** at electronic ink, but you will get astonishing results. Most of the time, that ink is not printable.

Known Problems:

- If you select a font that is too big to be displayed in the preview window, you will get strange clipping in the preview window.
- Applying growing sizes to fonts will sometimes result in a smaller size than expected.
- The "Notes" application sometimes forgets the selected font. This happens with the "Styles" application as well.
- Pay attention not to install a new font package when a window with that font is open. If you ignore this warning, selecting the text will gobble it. It's best to open Extras, install new fonts, and power off/on your Newton.

System Requirements:

FontDrive for OS 1.x requires a Newton with OS 1.x. **FD-Keyboard** is not available for OS 1.x

Tested on a MessagePad 100 and MessagePad 120.

FontDrive and **FD-Keyboard** for OS 2.x requires a Newton with OS 2.x

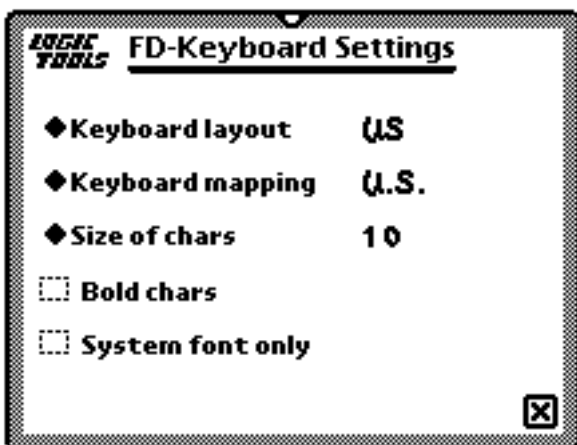
Tested on a MessagePad 120, MessagePad 130 and MessagePad 2000.

Note: Albeit **FontDrive** for OS 1.x works on OS 2.x you should use the OS 2.x version to exploit all your Newton's features.

Add on keyboard:

FD-Keyboard has a add on keyboard, named **FD-Keyboard**. **FD-Keyboard** is a multilingual keyboard that gives you US, British, Swedish, Spanish, Swiss and German mappings, both with US-ROM or German ROM.

You can switch between the mappings without going through the Extras->Prefs->Local->Keyboard cycle. You do have direct access from within the keyboard. This assignment not only changes the display-keyboard, it also changes the mapping of your external keyboard. German keyboards would have a US-mapping with US-ROMs. But you can configure even more. You can reach the settings by taping on the little wrench in the lower left corner.



"Keyboard layout" influences how the keys are arranged on the keyboard. You can note the difference best with the return key. With "Keyboard mapping" you select the language. "Size of chars" sets how large the characters are displayed on the keyboard. You can select from 9 to 12 points. "Bold chars" will display the characters in bold. Useful on MP 120 MP 130 or MP 2000 if you select the big keyboard. "System font only" disables the automatic redisplay of the keyboard if you apply another font thou

FontDrive. If you selected, for example, a Cyrillic font in **FontDrive** and tap "Apply" in **FontDrive**, the **FD-Keyboard** will redisplay with the Cyrillic font. Useful if you are working with special foreign fonts, or symbol fonts.

If you do have a MP 2000 you will find a additional button beneath "System font only". Selecting "Big keyboard" will display a keyboard in the original MP 2000 size.

Registration:

FontDrive is both freeware and shareware. After installation, **FontDrive** runs in demo mode. This means that you have the full functionality of the registered version plus some "annoying" messages when you start the program. After several starts, these messages will disappear, and the program switches to freeware mode. The limitations of freeware mode are listed below.

Registration is very easy!

Registration from abroad:

If you do have euro-cheques (and **only euro-cheques**), fill in DM (or DEM) as currency, as amount 10 and send it to the address below.

You can also send bank notes. I accept US-dollar, Australian dollar, Austrian shilling, Swiss francs, French francs, British pounds and Italian lira (when was your last visit to Europe?) in the equivalent of 10 US\$.

Don't forget to give your e-mail address or postal address.

If you register, you will get instructions what to do to set **FontDrive** to registered mode.

If you have registered a OS 1.x version and decide to switch to a newer Newton, you still can use your registration-code.

Registered users will be noticed when new version are released.

Registered users get a free subscription to the Newton FontPool. You will get fonts converted for the Newton in regular intervals. These fonts will be sent to you via e-mail at no extra charge.

Please note, that some of these fonts are shareware. The requested fee is to be paid to the author of the font, not me.

Limitations Of The Freeware-Version:

If you don't register **FontDrive**, it will switch to freeware mode after a certain time. From that moment on it supports only the built-in fonts and the predefined sizes. There are no other limitations. Feel free to use **FontDrive** in freeware mode!
FD-Keyboard requires a **FontDrive** in demo mode or a registered **FontDrive**.

Legal Stuff:

FontDrive is shareware. This means that it can not be sold. If it is redistributed on CDs or diskettes, you need the written author's approval.

You expressively can hand it to others as long as the complete documentation is included. You may not give the registration-key to others.

The program is provided as is. There is no warranty of any kind. I am not responsible for any damage, direct or indirect. Use at your own risk.

NEWTON, OS 2.0, MessagePad and other names are registered trademarks of Apple Computer, Inc.

"Packing List":

Liesmich.txt: This text in German

Liesmich.pdf: This text in pdf in German
Kurz.txt: Short description in German
Readme.txt: This text
Readme.pdf: This text as pdf
Short.txt: Short description
FD1.x_DE.pkg: German version of **FontDrive** for OS 1.x
FD1.x_US.pkg: English version **FontDrive** for OS 1.x
FD2.x_DE.pkg: German version of **FontDrive** for OS 2.x
FD2.x_US.pkg: English version **FontDrive** for OS 2.x
FDKBD_DE.pkg: German version of the add on keyboard
FDKBD_US.pkg: English version of the add on keyboard
Minico.pkg: Loadable Mini-Font by Michael Peay
There may be more fonts in the archive, please read the accompanying text.

Divers:

I appreciate any kind of critics or suggestions!

If you want **FontDrive** to be localized to other languages, feel free to contact me!

If you do have any fonts that are not copyrighted, or you do have all rights of, I would be glad to include it with **FontDrive**.

Credits:

Thanks to Michael Peay <mpeay@gryphonsw.com>, the creator of Minico. Minico gave me the idea to support download able and scalable fonts. Also Mike did all of the proof-reading of this documentation. Any errors left in here were put in by me with intent!

Special thanks to Sanjay "Sanj" Vakil who made some changes to Minico.

Last, but not least to the beta-testers, especially Frank A. Maier for his ideas, not just for FontDrive.

For additional information about Minico contact Michael's Minico and NIE apps page at <<http://www.gryphonsw.com/~mpeay/newton-font.html>>.

Change History:

V 2.1 -> V 2.2

- Fonts in the font popup are now ordered.
- Added **FD-Keyboard**.
- Improved configuration where to add the font-button
- Prefs were not stored reset proof
- Freezing **FontDrive** lead to the loss of prefs
- ... and the name changed. **MoreFonts** already existed.

V 2.0 -> V 2.1

- Button in notes for speedier access of **FontDrive**.
- Selectable text of button in notes.
- Configurable "Reopen style-popup".
- Applying your font-selection to a marked text-area no longer changes your

default-font.

- Fonts that did not comply with Apple's conventions for fonts no longer crashes **FontDrive**. In this case, **FontDrive** assumes the sizes 9, 10, 12 and 18 point.
- **FontDrive** prefs are now save application-specific to save heap.

V 1.5 -> V 2.0

- Support for scalability from 6 to 99 point.
- New look for minimize-button.

V 1.1 -> V 1.5 (Version 1.5 was not given to the public)

- Now supports download able fonts
- FontDrive came off-screen sometimes if you rotated in the minimized mode.
- The font names are now the internal ones.

Contact:

Please use e-mail if possible!

For enhancements, bugs and job-offers contact:

Compuserve-ID: 100633,1670

e-mail: Nick.LogicTools@t-online.de

home-page: <http://home.t-online.de/home/Nick.LogicTools>

Nick Müller

logic tools

Fürstenriederstr. 19

D 80687 München

GERMANY